

# LumiDas-EX

## Hazardous Location Fixture



### FEATURES & SPECIFICATIONS

LumiDas EX series is designed to replace conventional Hazardous Location lamps. The product is compact and low weight compared to high-watt LED products or conventional hazardous location products. This LED luminaire is safe and easy to use in areas where flammable or explosive vapors or gases are present and hazardous areas where long life and low maintenance costs are desired.

#### Performance

Lumen Output : 17,000lm  
 Efficacy : 100lm/W  
 CRI : 70+

#### Electrical

Integral, High Efficiency Driver.  
 Input Voltage :120-277VAC or 347/480VAC, 50/60Hz  
 Power Factor: >0.9  
 Surge Protection : 15kV

#### Environmental

IP66(Wet Location)  
 Operating Temperature : -40°C to 50°C(-40°F to 122 °F)  
 Operation Humidity : 5 to 95%

#### Hazardous Locations

Class I, Division 2, Groups A, B, C, D  
 Class II, Division 2, Groups F,G

#### Listing

UL(cUL) 844 : Listed  
 UL(cUL) 1588 : Listed  
 UL50E(NEMA4X) : Listed  
 DLC:Pending  
 FCC

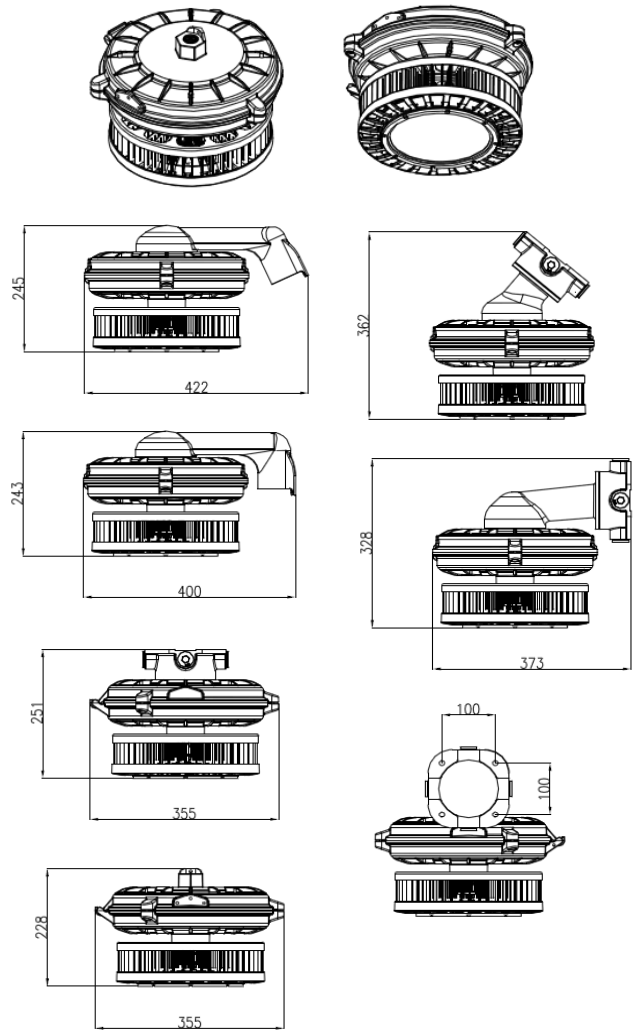


#### Warranty

5 YEARS limited warranty.  
 Minimum 50,000 hours lifetime

### LumiDas-EX 170W

#### Explosion Proof Lighting



All dimensions are millimeters  
 Unless otherwise indicated

### ORDERING INFORMATION

Example: EX170N-UM-D2BCE(DDC)

Model Name	Power Consumption	Input Voltage	Hazardous Locations	CCT	Optic	Option Cover	Option Luminaire Body
EX Explosion Proof	170N	UM : 120~277V CH : 347/480V	D2 : Division 2	D : 5,000K	D 120° : Diffused	C : Clear	A : Luminaire A (Ceiling etc)  B : Luminaire B (Pendant, Swivel, Clamp)

Lead times will vary depending on order volumes and options selected. Consult with your sales representative.

### Temperature Condition

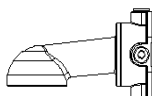
Catalog No.	Class I , Division 2				Class II , Division 2	
	-25°C to 40°C ambient	-25°C to 50°C ambient	-40°C to 40°C ambient	-40°C to 50°C ambient	40°C ambient	50°C ambient
EX170-xx-D2(DDx-x)			T3C	T3C	T3C	T3B

### Family Tree

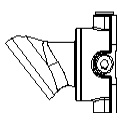
Ceiling :BCE



Wall 90: BW9

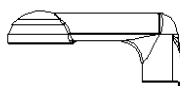


Wall 40 :BW4



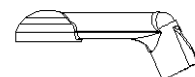
Stanchion 90 1-1/2 : B92

Stanchion 90 1-1/4 : B94

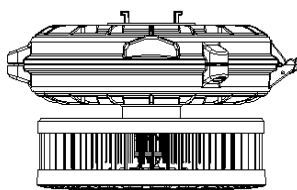


Stanchion 25 1-1/2 : B22

Stanchion 25 1-1/4 : B24

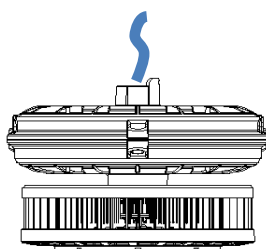


LED LUMINAIRE A  
( COVER MODULE A)



LED LUMINAIRE B  
( COVER MODULE B )

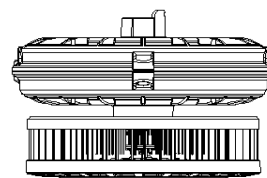
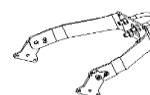
Pendant : BPE



Swivel : BSW



Clamp : BCL



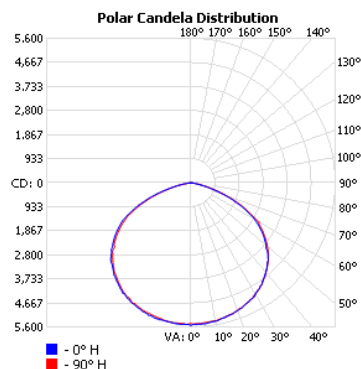
# LumiDas-EX

## Hazardous Location Fixture

### PHOTOMETRICS

**EX170-xx-xx(DDC-x)**, 8,400 delivered lumens, tested by Dongbu Lightec Lab, tested in accordance to IESNA LM-79

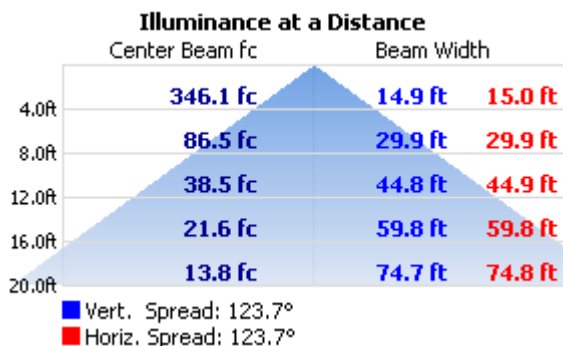
#### POLAR GRAPH



#### LUMENS PER ZONE

Zone	Lumens	% Total
0-10	522.1	3.0%
10-20	1,523.6	8.9%
20-30	2,391.1	13.9%
30-40	3,020.0	17.6%
40-50	3,303.0	19.3%
50-60	3,120.3	18.2%
60-70	2,287.8	13.3%
70-80	891.9	5.2%
80-90	89.7	0.5%

#### CONE DIAGRAM at 20 Ft



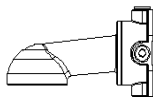
### Mounting Option

#### Luminaire A (Ceiling etc)

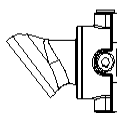
Ceiling :BCE



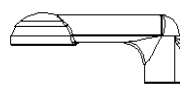
Wall 90: BW9



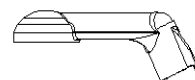
Wall 40 :BW4



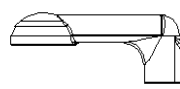
Stanchion 90 1-1/2 : B92



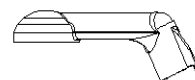
Stanchion 25 1-1/2 : B22



Stanchion 90 1-1/4 : B94



Stanchion 25 1-1/4 : B24



#### Luminaire B (Swivel, Clamp)

Swivel : BSW



Clamp : BCL

