

# LumiDas-EX

## Hazardous Location Fixture



### FEATURES & SPECIFICATIONS

LumiDas EX series is designed to replace conventional Hazardous Location lamps. The product is compact and low weight compared to high-watt LED products or conventional hazardous location products. This LED luminaire is safe and easy to use in areas where flammable or explosive vapors or gases are present and hazardous areas where long life and low maintenance costs are desired.

#### Performance

Lumen Output : 11,550lm  
 Efficacy : 105lm/W  
 CRI : 80+

#### Electrical

Integral, High Efficiency Driver.  
 Input Voltage : 120-277VAC or 347/480VAC, 50/60Hz  
 Power Factor: >0.9  
 Surge Protection : 15kV

#### Environmental

IP66(Wet Location)  
 Operating Temperature : -25°C to 50°C(-13°F to 122 °F)  
 Operation Humidity : 5 to 95%

#### Hazardous Locations

Class I, Division 2, Groups A, B, C, D  
 Class II, Division 2, Groups F,G

#### Listing

UL(cUL) 844 : Listed  
 UL(cUL) 1588 : Listed  
 UL50E(NEMA4X) : Listed  
 DLC:Pending  
 FCC

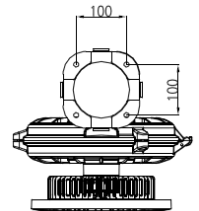
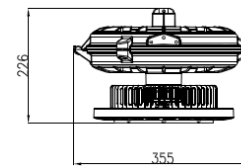
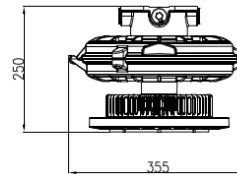
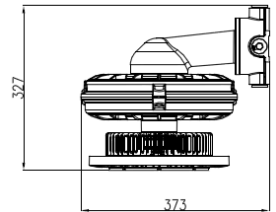
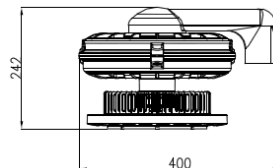
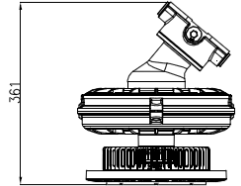
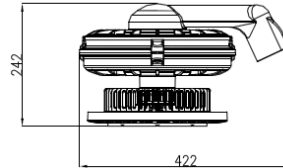
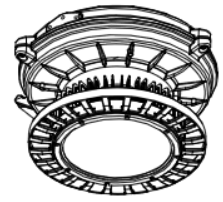
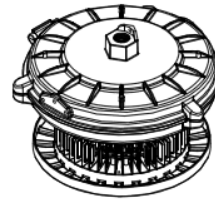


#### Warranty

5 YEARS limited warranty.  
 Minimum 50,000 hours lifetime

### LumiDas-EX 110W

#### Explosion Proof Lighting



All dimensions are millimeters  
 Unless otherwise indicated

### ORDERING INFORMATION

Example: EX110N-UM-D2BCE(DDC)

| Model Name            | Power Consumption | Input Voltage                        | Hazardous Locations | Option        |                      |              |   |
|-----------------------|-------------------|--------------------------------------|---------------------|---------------|----------------------|--------------|---|
|                       |                   |                                      |                     | CCT           | Optic                | Cover        | Luminaire Body  |
| EX<br>Explosion Proof | 110N              | UM<br>: 120~277V<br>CH<br>: 347/480V | D2<br>: Division 2  | D<br>: 5,000K | D 120°<br>: Diffused | C<br>: Clear | A : Luminaire A<br>(Ceiling etc)<br><br>B : Luminaire B<br>(Pendant, Swivel, Clamp) |

Lead times will vary depending on order volumes and options selected. Consult with your sales representative.

### Temperature Condition

| Catalog No.        | Class I, Division 2   |                       |                       |                       | Class II, Division 2 |              |
|--------------------|-----------------------|-----------------------|-----------------------|-----------------------|----------------------|--------------|
|                    | -25°C to 40°C ambient | -25°C to 50°C ambient | -40°C to 40°C ambient | -40°C to 50°C ambient | 40°C ambient         | 50°C ambient |
| EX110-UM-D2(DDC-x) | T4A                   | T4                    |                       |                       | T4A                  | T4           |
| EX110-CH-D2(DDC-x) |                       |                       | T4A                   | T4                    | T4A                  | T4           |

### Family Tree

Ceiling :BCE

Wall 90: BW9

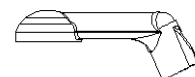
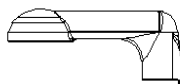
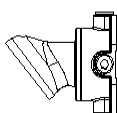
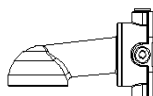
Wall 40 :BW4

Stanchion 90 1-1/2 : B92

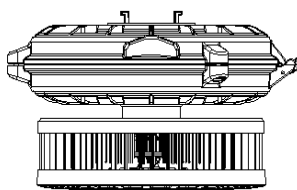
Stanchion 25 1-1/2 : B22

Stanchion 90 1-1/4 : B94

Stanchion 25 1-1/4 : B24



LED LUMINAIRE A  
( COVER MODULE A)

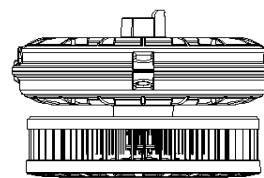
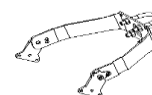
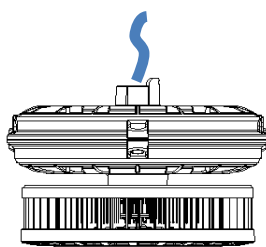


LED LUMINAIRE B  
( COVER MODULE B )

Pendant : BPE

Swivel : BSW

Clamp : BCL



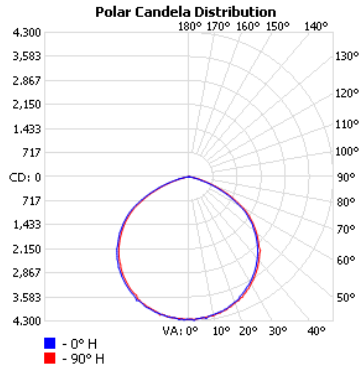
# LumiDas-EX

## Hazardous Location Fixture

### PHOTOMETRICS

**EX110-xx-xx(DDC-x)**, 8,400 delivered lumens, tested by Dongbu Lightec Lab, tested in accordance to IESNA LM-79

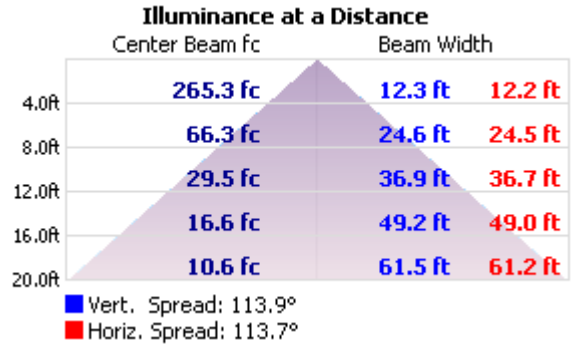
#### POLAR GRAPH



#### LUMENS PER ZONE

| Zone  | Lumens  | % Total |
|-------|---------|---------|
| 0-10  | 402.9   | 3.4%    |
| 10-20 | 1,163.6 | 9.9%    |
| 20-30 | 1,785.0 | 15.2%   |
| 30-40 | 2,182.3 | 18.6%   |
| 40-50 | 2,287.5 | 19.5%   |
| 50-60 | 2,049.7 | 17.5%   |
| 60-70 | 1,357.9 | 11.6%   |
| 70-80 | 464.3   | 4.0%    |
| 80-90 | 44.5    | 0.4%    |

#### CONE DIAGRAM at 20 Ft



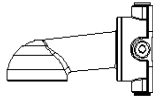
### Mounting Option

#### Luminaire A (Ceiling etc)

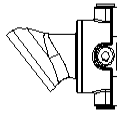
Ceiling :BCE



Wall 90: BW9

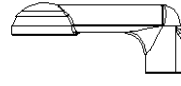


Wall 40 :BW4



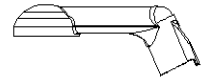
Stanchion 90 1-1/2 : B92

Stanchion 90 1-1/4 : B94



Stanchion 25 1-1/2 : B22

Stanchion 25 1-1/4 : B24



#### Luminaire B (Swivel, Clamp)

Swivel : BSW



Clamp : BCL

